

TO: Members of the Board of Trustees

FR: Jay Wasson, Vice President for Physical Facilities and Chief Public Safety Officer

DATE: May 26, 2025

RE: Endorsement of Conceptual Campus Master Plan for Indianapolis

The Purdue University in Indianapolis Campus Master Plan will be presented to the Physical Facilities Committee on June 6, 2025. The master plan is the product of numerous meetings and feedback sessions with faculty, staff, students and the community. These meetings took place over many months, and the resulting plan will provide the framework for future campus growth and development.

I will provide some brief comments and introduce Jessica Leonard of Ayers Saint Gross to provide a short overview presentation of the Indianapolis Campus Master Plan prior to requesting the Board of Trustees endorse the plan. The final documentation for the master plan will be available in the coming weeks.

c: Chairman Gary Lehman
President Mung Chiang
Treasurer Chris Ruhl
Provost Patrick Wolfe
Corporate Secretary Cindy Ream
General Counsel Steve Schultz



Purdue University In Indianapolis

Campus Master Plan

BOARD OF TRUSTEES PRESENTATION

June 6, 2025

PURDUE UNIVERSITY IN INDIANAPOLIS



Building the future
for Purdue's first
comprehensive urban campus.

Process and Engagement

16 MONTH TIMELINE

Visioning
Analysis
Programmatic Needs
Scenario Planning + Phasing
Master Plan Vision
Design Guidelines

CAMPUS & COMMUNITY ENGAGEMENT

City of Indianapolis
Indiana Avenue Corridor Strategic Plan
Local & Neighborhood Stakeholders
Civic Partners
Touring & Listening
Master Plan Committees
Deans

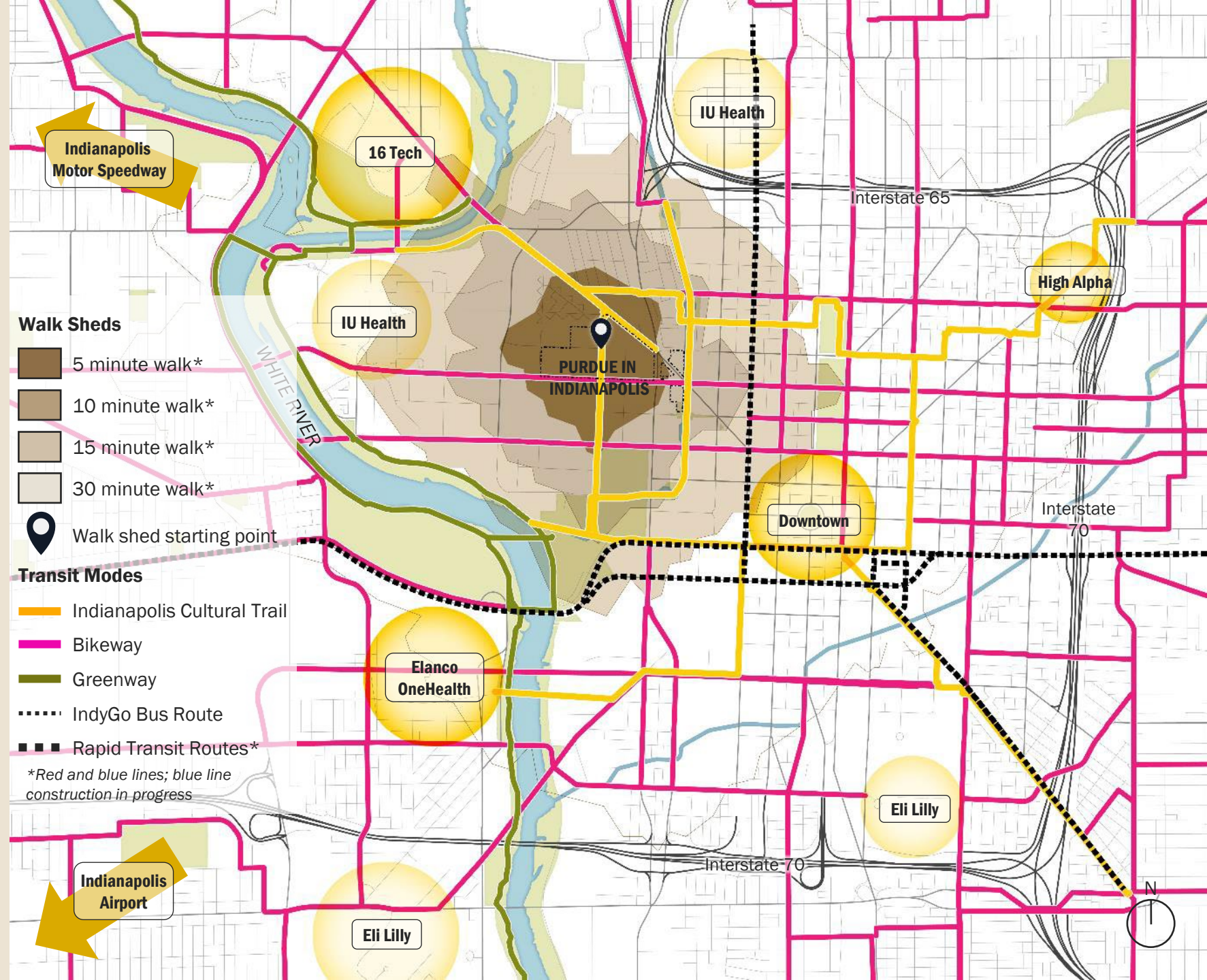
COORDINATED PLANNING

Academic Program Planning
Research Program Planning
Enrollment Planning
Academic Success Building
Utilities Master Plan



Context: Industry and Connectivity

- Indianapolis offers numerous opportunities for partnerships with local industry
- Campus core is integrated into existing transportation networks and proximate to civic and cultural amenities
- Partner sites are potential locations for strategic additional Purdue presence

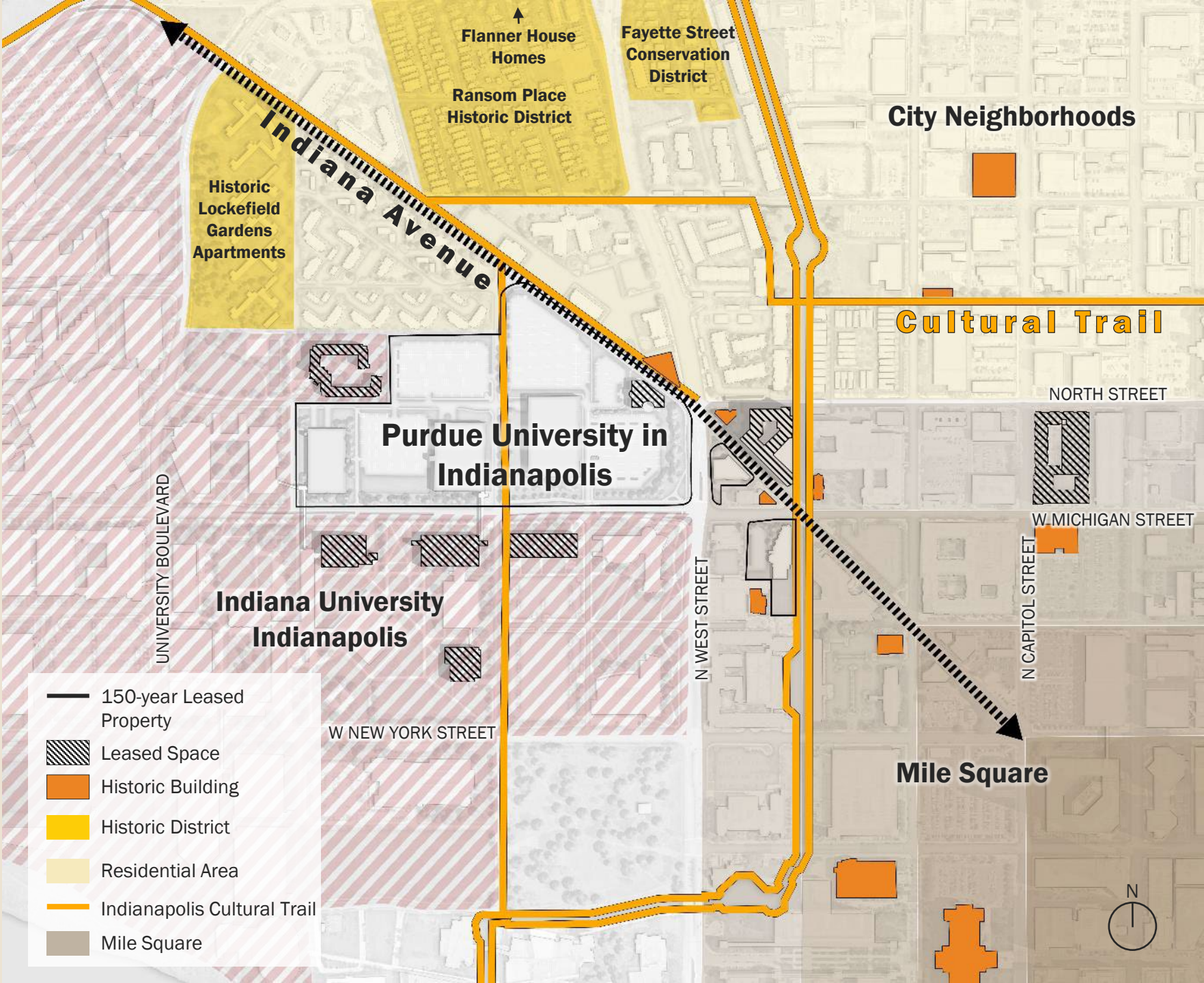


Context: Campus in the City

Purdue must thoughtfully balance growth with neighborhood & city needs to build and maintain trust



Historic Indianapolis Recorder office, 500 block of Indiana Avenue



Purdue University in Indianapolis

ESTABLISH A CITY HUB FOR GROWTH AND PARTNERSHIP

PLANNING PRINCIPLES

Promote Vibrancy

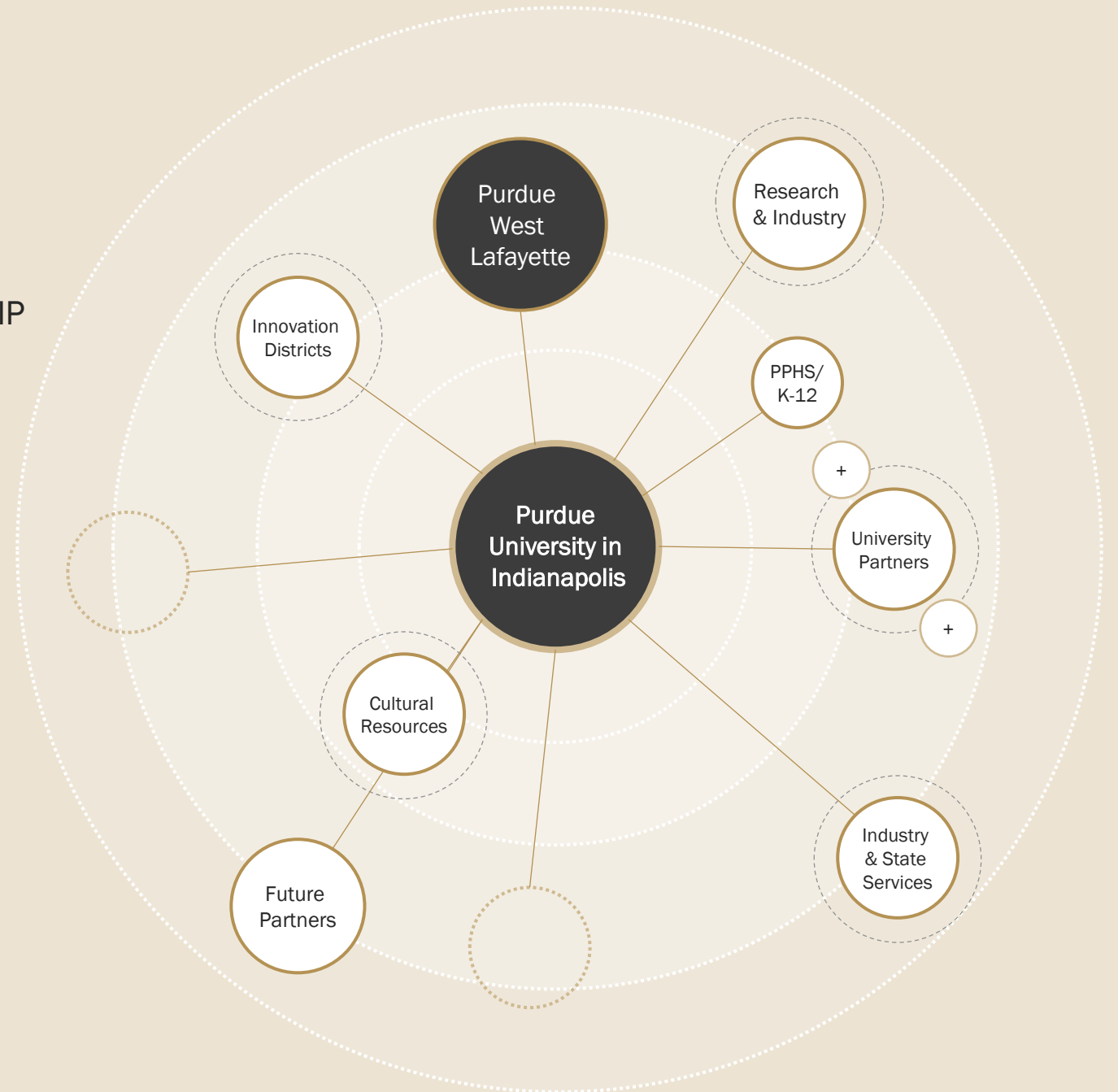
Strengthen Identity

Foster Collaboration

Maximize Utilization & Flexibility

Enhance Connectivity

Nurture Sustainability

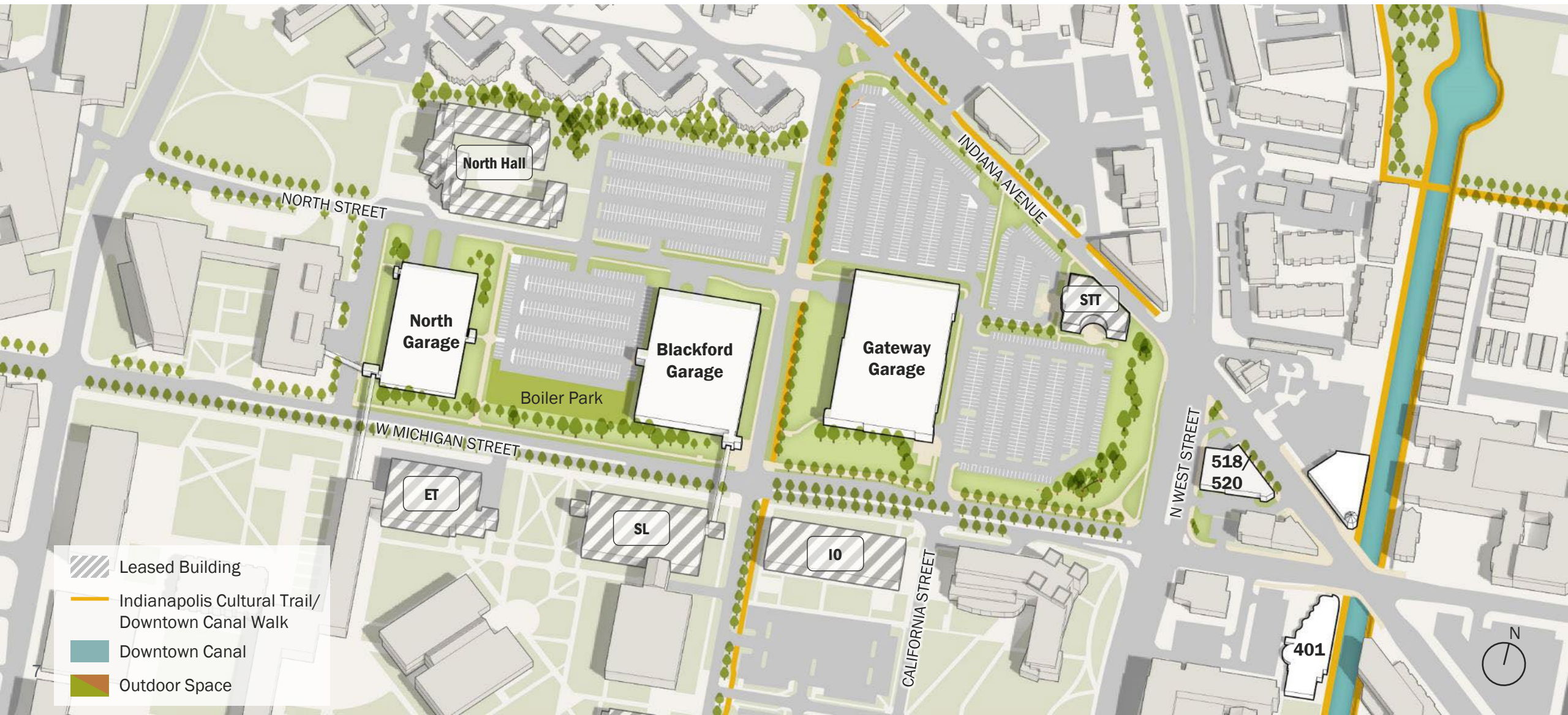


Campus Today

195K SF
square feet leased and owned
programmatic space

1,120
leased beds

Boiler Park
outdoor space



Near-Term Plan

7 new buildings
2.17M GSF
(excluding parking)

1.11M GSF
programmatic space
(non-housing or parking space)

Up to
3,260
Total (leased and
owned) beds

Supports enrollment of approx.
6,500
students with off-campus
partnerships



50-Year Vision

16 new buildings
4.5M GSF
(excluding parking)

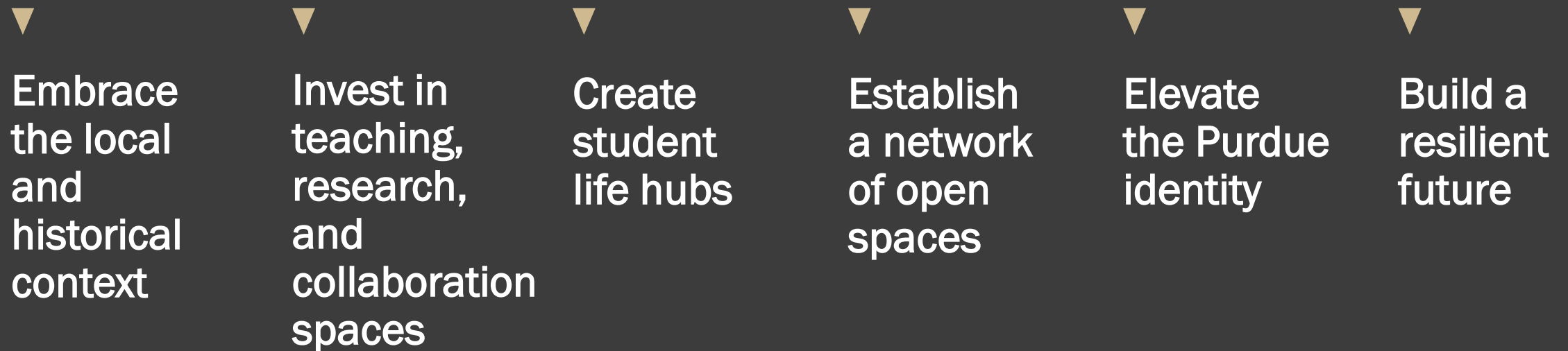
2.84M GSF
programmatic space
(non-housing or parking space)

Up to
5,320
total (leased and
owned) beds

Supports enrollment of
15,000
students with off-campus
partnerships



Master Plan Goals



Embrace the Local and Historical Context

Existing Indiana Avenue



Embrace the Local and Historical Context

Looking down Indiana Avenue



Create Student Life Hubs

Existing looking east down North Street



Create Student Life Hubs

Looking east down
pedestrianized North Street



Establish a Network of Open Spaces

Existing California Street



Establish a Network of Open Spaces

Near-term activation of California Street



Elevate the Purdue Identity

Existing Michigan and West



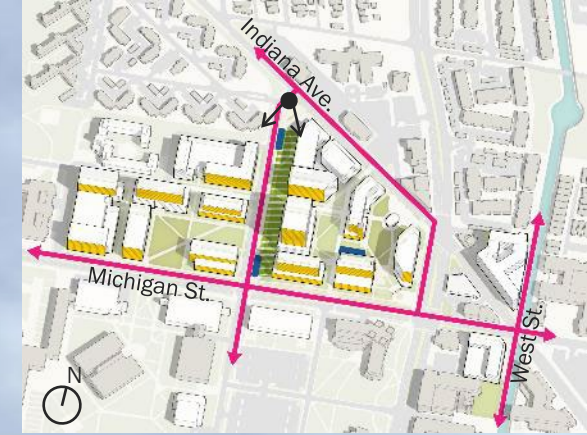
Elevate the Purdue Identity

View of Gateway and West Street



Build a Resilient Future

Existing South along Blackford Street



Build a Resilient Future

Looking South along Blackford Street



2025 CAMPUS MASTER PLAN

A Vision for 50 Years of Giant Leaps in Indianapolis

501

ASB

Madam Walker
Legacy Center

N WEST STREET

INDIANA AVENUE

PURDUE UNIVERSITY IN INDIANAPOLIS



Master Plan Impact

Vibrant

residential experience that
embraces the community

~80%

of 15,000 enrollment program
accommodated on 28 acres

Flexible

phased strategy for
implementation

~3,500

students housed on 28 acres

Connected

to West Lafayette with a
distinct city experience

60%

open space on 28 acres